

Rambam Health Care Campus

March 2009



*Rabbi Moses Ben Maimon - Maimonides (1135 -1204)
great medieval teacher philosopher and physician*



<http://www.rambam.org.il>

ISRAEL - Health and Population Indicators

Total Population	~7 million
Over 65 years of age	10%
Under 14 years of age	28%
Life expectancy at birth (yrs)	F=82, M=79
Infant mortality rate	4 ‰
Health expenditure (%GDP)	7.8%
Per capita health expenditure	~2500\$
General Hosp. beds	1.95\1000
Average occupancy	93%
Average Hosp. stay	4.3
MDs	3.5\1000



Population:

- City of Haifa – 280,000
- With suburbs – 780,000
- Northern Israel – 2,000,000

“Rambam Health Care Campus”:

- ✓ Rambam Medical Center
- ✓ Rappaport School of Medicine
- ✓ Rappaport Institute for Research
- ✓ In the future - Biotechnology Tower



Physicians

Partners in Haifa:

High Tech Industry

Technion IIT

University of Haifa



Scientists

Engineers

Rambam – The Tertiary Medical Center for Northern Israel (2008 data)

Hospital beds	898
Emergency Department visits	117,318
Annual admissions	77,432
Average occupancy	100.64%
Outpatients visits	543,327
Surgical activity (number of patients)	19,347
Cardiovascular Catheterizations	5,265
Physicians	785
Nurses	1,386

Director General

Director, Medical & Research Development

Division of
Medicine

Division of
Surgery

Division of
Obstetrics &
Gynecology

Division of
Psychiatry

Children's
Hospital

Core & Support Services

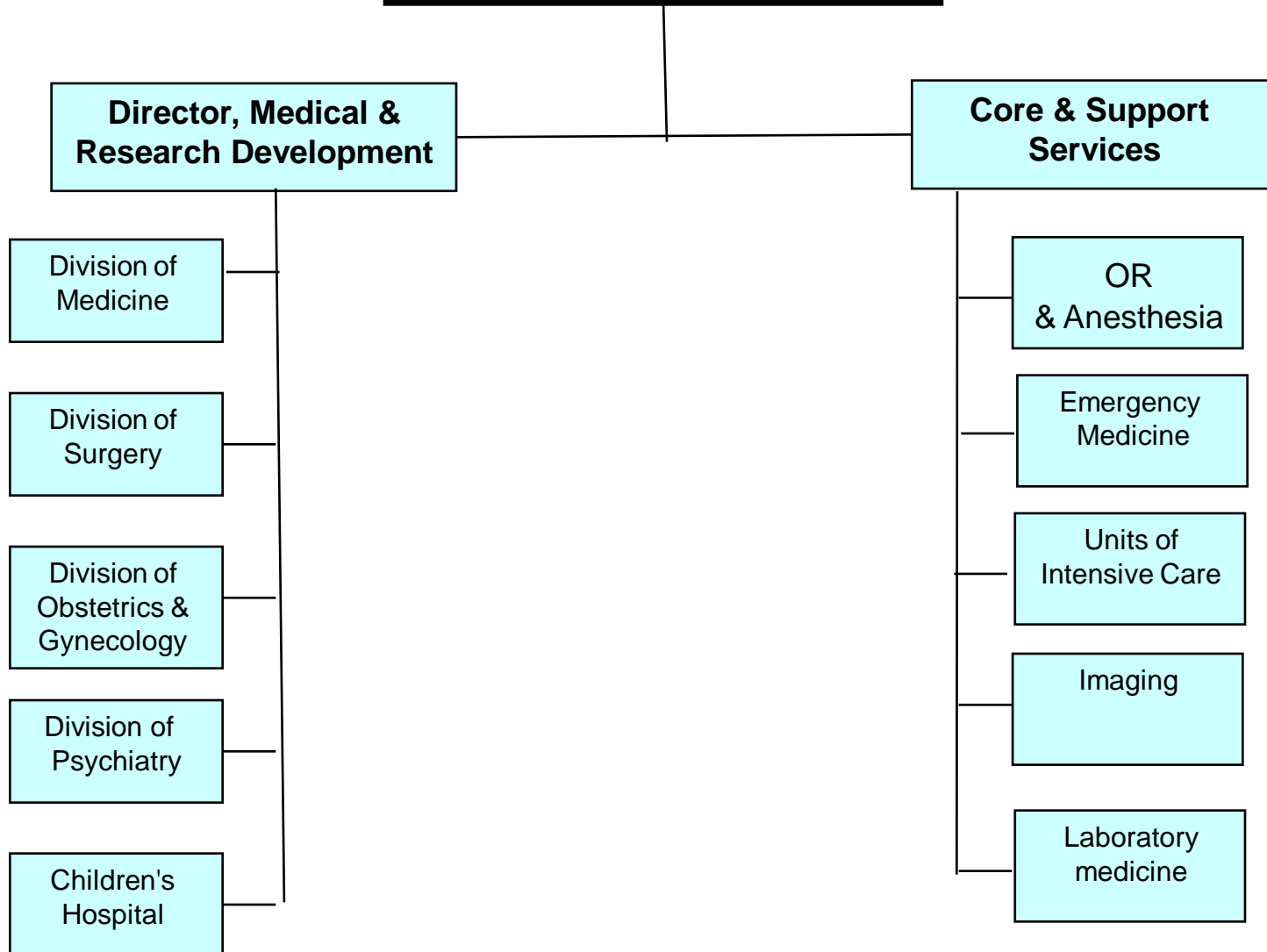
OR
& Anesthesia

Emergency
Medicine

Units of
Intensive Care

Imaging

Laboratory
medicine



Division of Medicine

Chair: [Rami Eliakim MD](#)

Departments:

- Five general internal medicine departments (A-E)
- Nephrology
- Cardiology
- Hematology
- Dermatology
- Neurology
- Oncology

Units and Institutes:

- Rheumatology,
- Endocrinology
- Gastroenterology
- Hepatology
- Pulmonology
- Infectious Diseases
- Clinical Pharmacology
- Clinical Immunology

The Internal Medicine Division is the busiest in the hospital, providing inpatient medical care and ambulatory care.

The Division was founded to integrate, streamline and synchronize the different aspects related to treating internal medicine patients/

In the future, an intensive care unit dedicated to the Division, including respiratory treatment, is planned to be built.

Division of Surgery

Chair: [Lael A. Best MD](#)

Departments & Clinics

- General surgery A & B
- Orthopedic surgery
- Neurosurgery
- Urology
- Cardiac surgery
- Thoracic surgery
- Vascular surgery
- Ear, Nose & Throat
- Ophthalmology
- Plastic surgery
- Oral & dental surgery

The Division of Surgery is responsible for managing the physician personnel and coordinating the various departments and units.

The Division of Surgery is active in developing and improving the hospital's surgery services, by expanding the various types of surgery performed, applying advanced technologies, and coordinating recruitment of surgeons with unique specializations.

Division of Obstetrics and Gynecology

Chair: **Joseph Itskovitz MD DSc**

The division includes:

- The Gynecology and Endoscopic Surgery Unit
- The Onco-Gynecology Unit
- The Ultrasound Unit
- The IVF Unit and Sperm Bank

The division provides the full range of gynecological, obstetric and pre-natal services including pre-natal diagnoses, high risk pregnancies, ultrasound, fertility and onco-gynecology.

The division's In-Vitro-Fertilization (IVF) Unit is renowned for its high rate of successful pregnancies.

The labor and delivery rooms were designed to maximize the comfort of the patients, featuring the most advanced equipment and options for natural childbirth.

Division of Psychiatry & Mental Health

Chair: **Ehud Klein MD**

The Mental Health Division is comprised of an inpatient ward, a day treatment unit, ambulatory mental health services, a psychogeriatric service, a child and adolescent psychiatry service and consultation-liaison services.

The division provides diagnostic and treatment services for all psychiatric disorders in a wide range of settings. The treatment model is eclectic, and sophisticated biological treatments are provided wherever indicated.

All treatment is intensive and personal, under the responsibility of the personal psychiatric physician.

Children's Hospital

Chair: [Amos Etzioni MD](#)

Units and Clinics:

- Emergency
- Departments A & B
- ICU
- Hematology & oncology
- Cardiology
- Orthopedics
- Nephrology
- Nephrology
- Endocrinology
- Pulmonary diseases
- Gastroenterology & nutrition
- Rheumatology
- Urology
- Genetics

Children's Hospital provides advanced medical services and a comprehensive approach to treatment in every area of children's healthcare. The has 125 beds, 6 inpatient departments, a Pediatric Emergency Room, and 20 professional pediatric units; all medical services for children are provided under one roof. The hospital team includes 60 pediatric physicians specializing in their respective fields and 150 highly experienced professional nurses, as well as paramedic and management teams.

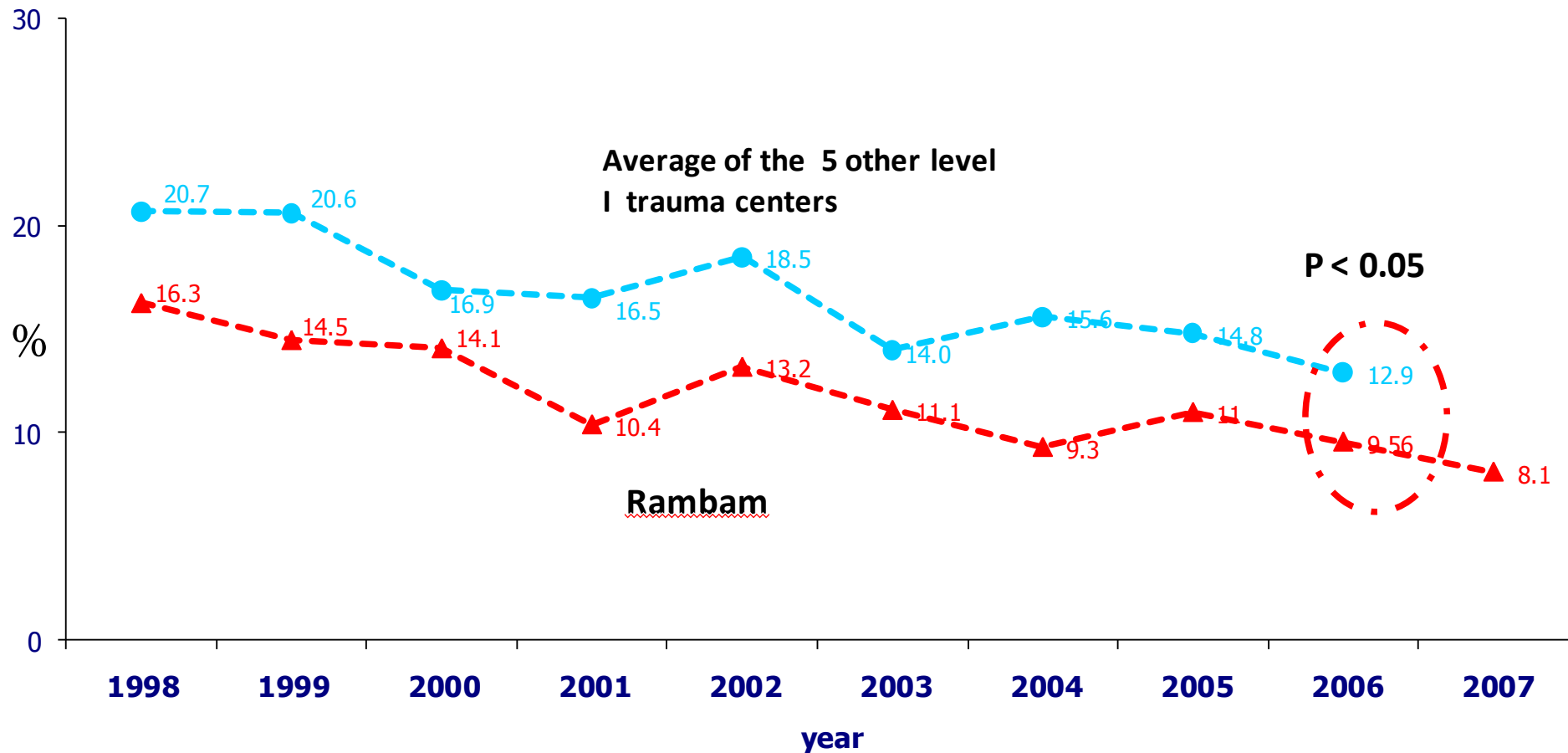
Trauma (2007)

Mortality (%)	Number of pts	ISS
0.22%	1785	1-8
1.13%	879	9-14
5.26%	551	16-24
17.48%	223	+25
2.38%	3439	total

Israeli Trauma Registry

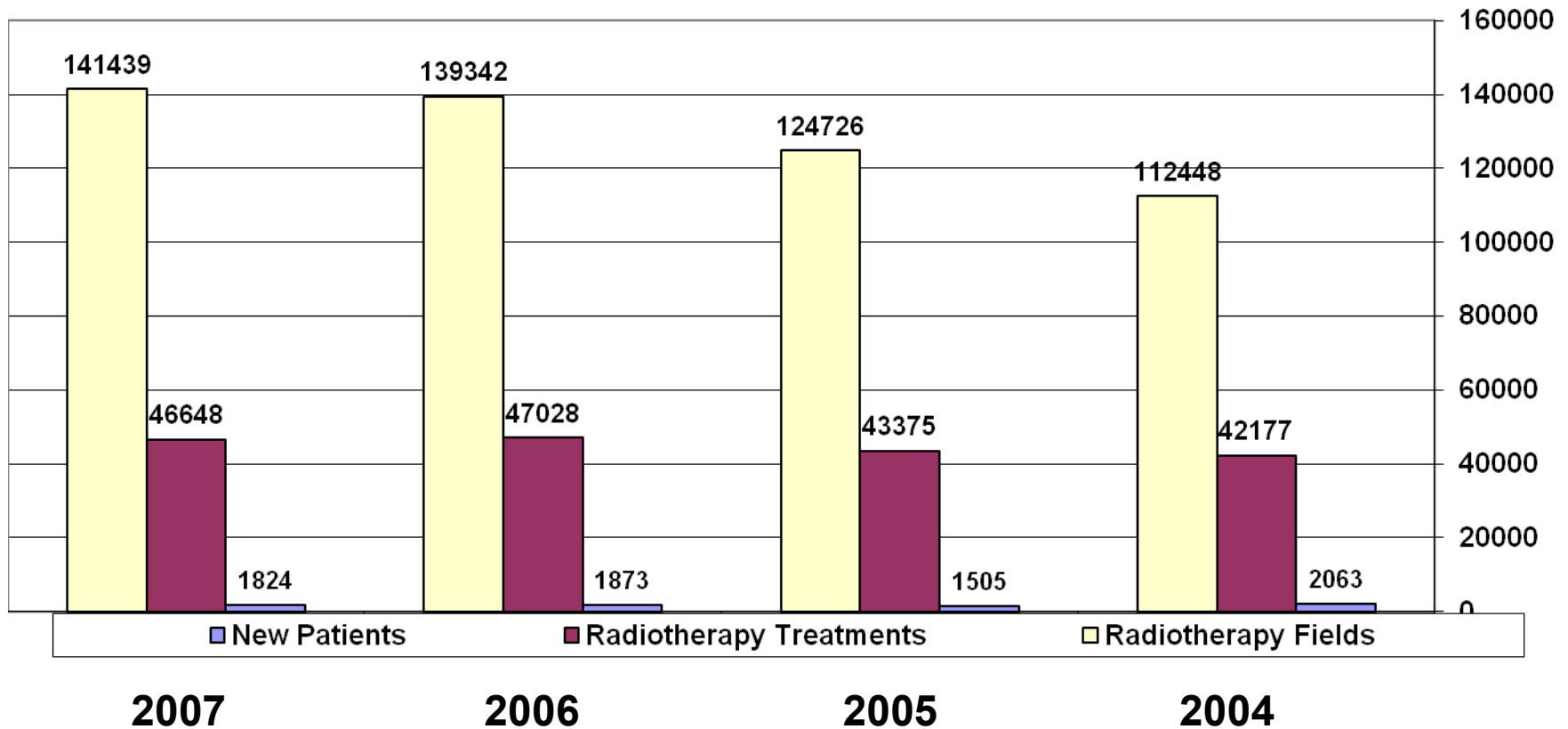
Major Trauma Mortality (ISS ≥ 16)

(1998-2007)

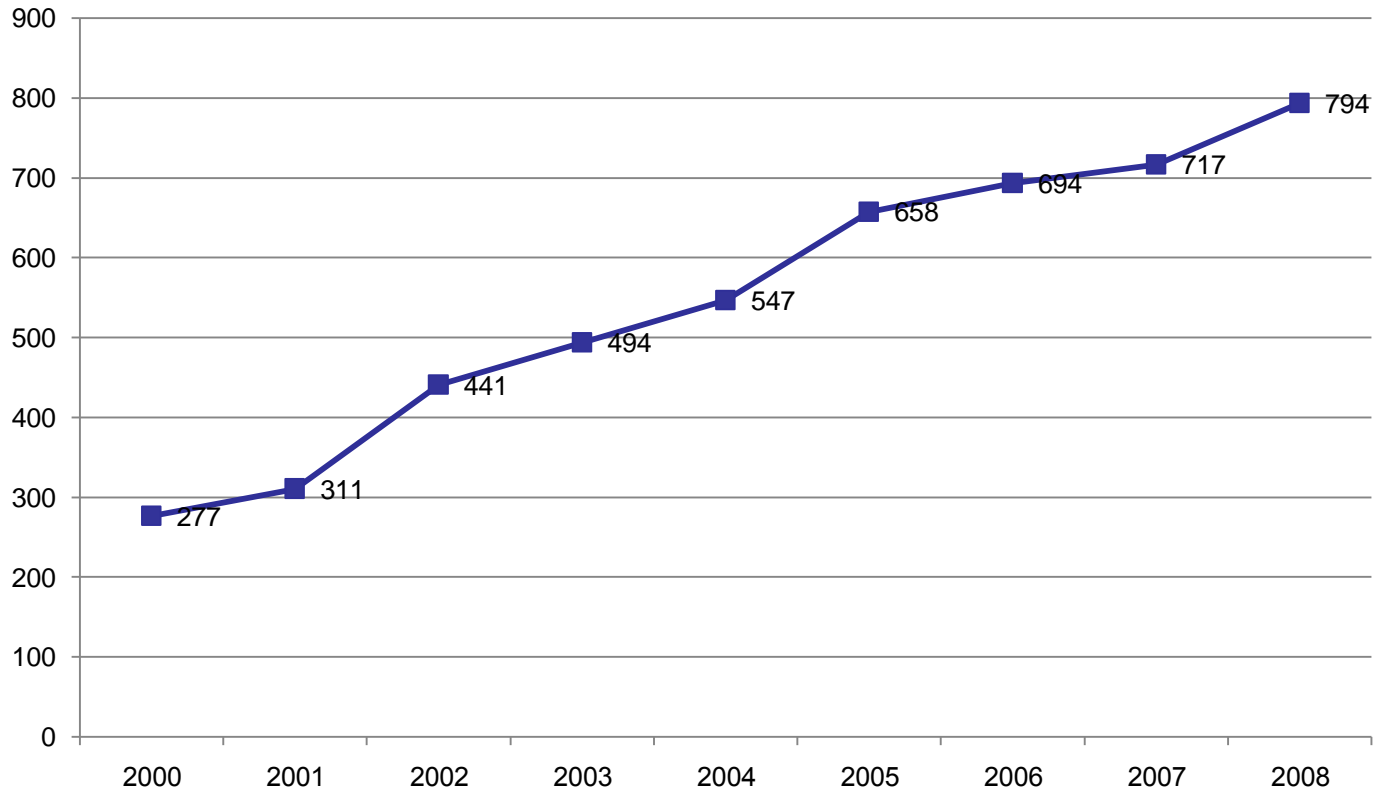


Radiotherapy

2004-2007

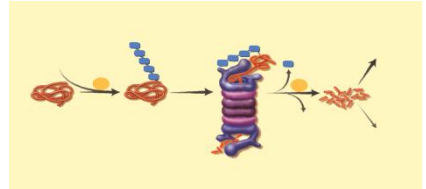


Number of research projects (2000-2008)

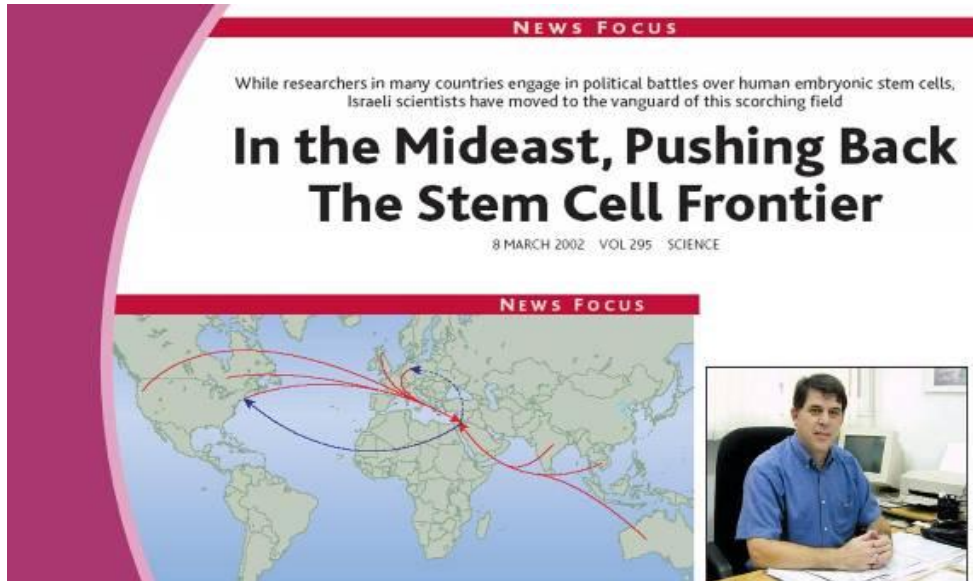


2004 - Prof. Hershko and Prof. Ciechanover (Chair, Scientific Advisory Board of Rambam), received the Nobel Prize in chemistry for the research of the UBIQUITIN system - responsible for turnover of cell proteins

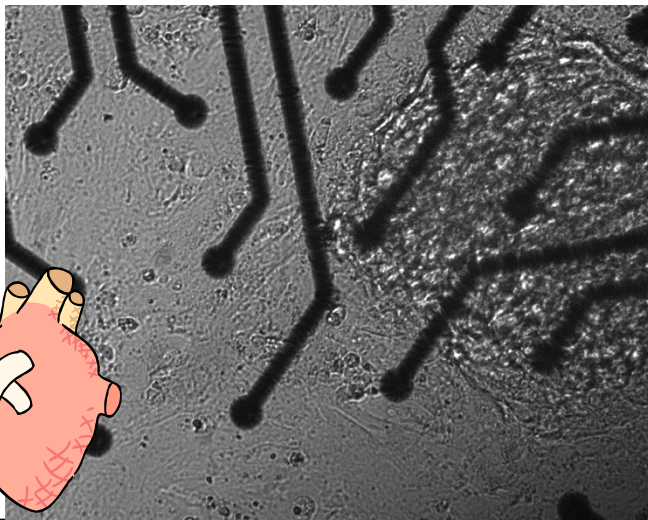
Velcade – 1st Ubiquitin based anti-cancer drug (MM; NH lymphoma) was approved by the FDA



Haifa – the origin of the first lines of Human Embryonic Stem Cells



Stem cell research is led by Prof. Itskovitz – Head, Dep. of Obstetrics & Gynecology at Rambam

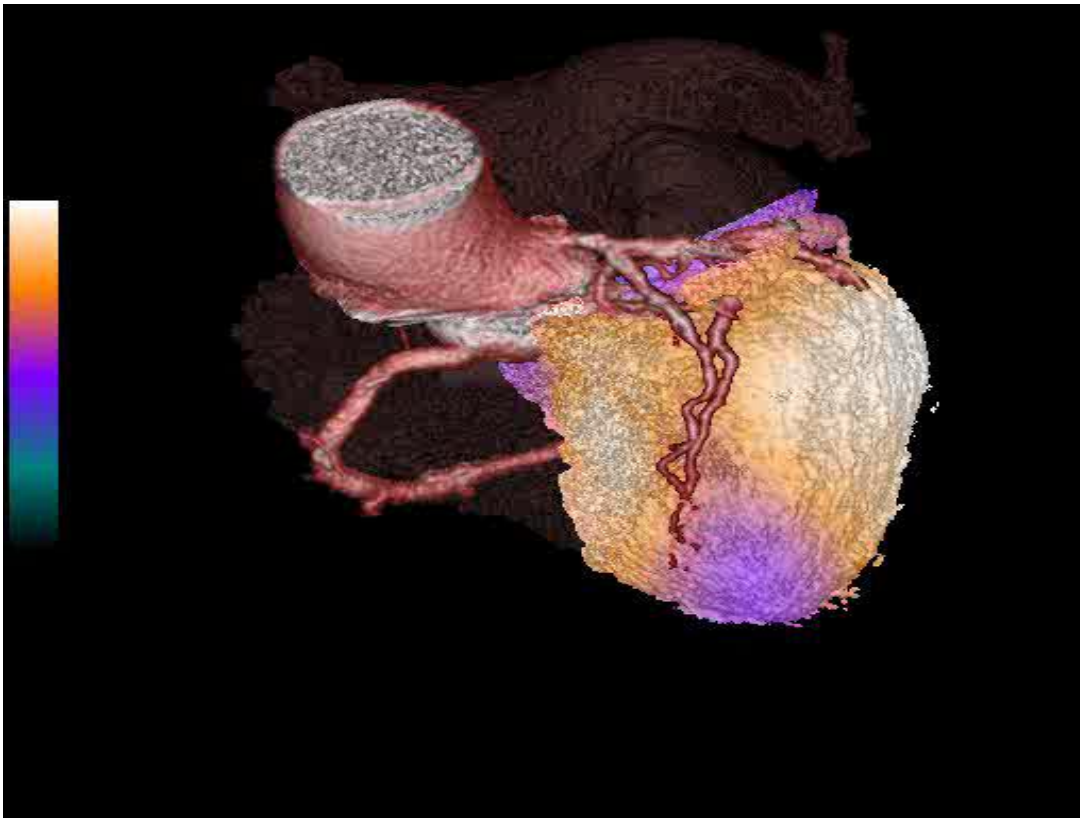


➤ Prof. Gepstein - Dep. of Cardiology created a “biological pacemaker” (turned stem cells into functioning pacemaker cells)

Hybrid Imaging (born in Haifa)

Collaboration of Rambam + GE Medical

SPECT\CT = a new hybrid scanner combining in one image coronary artery anatomy with myocardial perfusion



**Prof. Ora Israel, head NM
(Co-Inventor of Pet-CT)**

Rambam – The New Campus



Ruth Rappaport Children's Hospital

Biomedical Discovery Tower

Cardiovascular Hospital

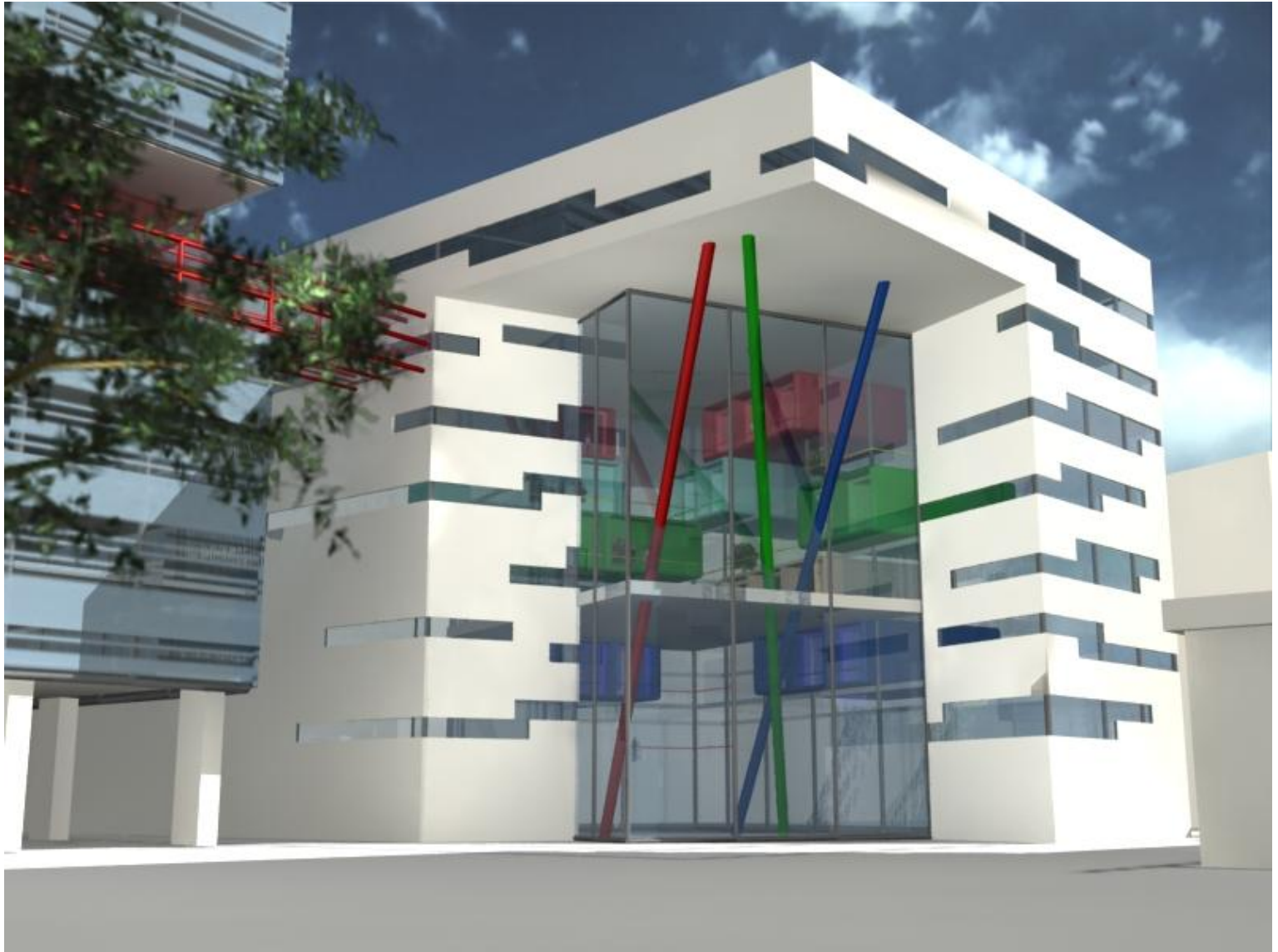
Oncology Hospital

SITE MODEL OF NEW URBAN PLAN

The Future – Emergency Medicine & Trauma Center (September 2009)



The Future – Ruth Rappaport Children's Hospital (estimated 2011)



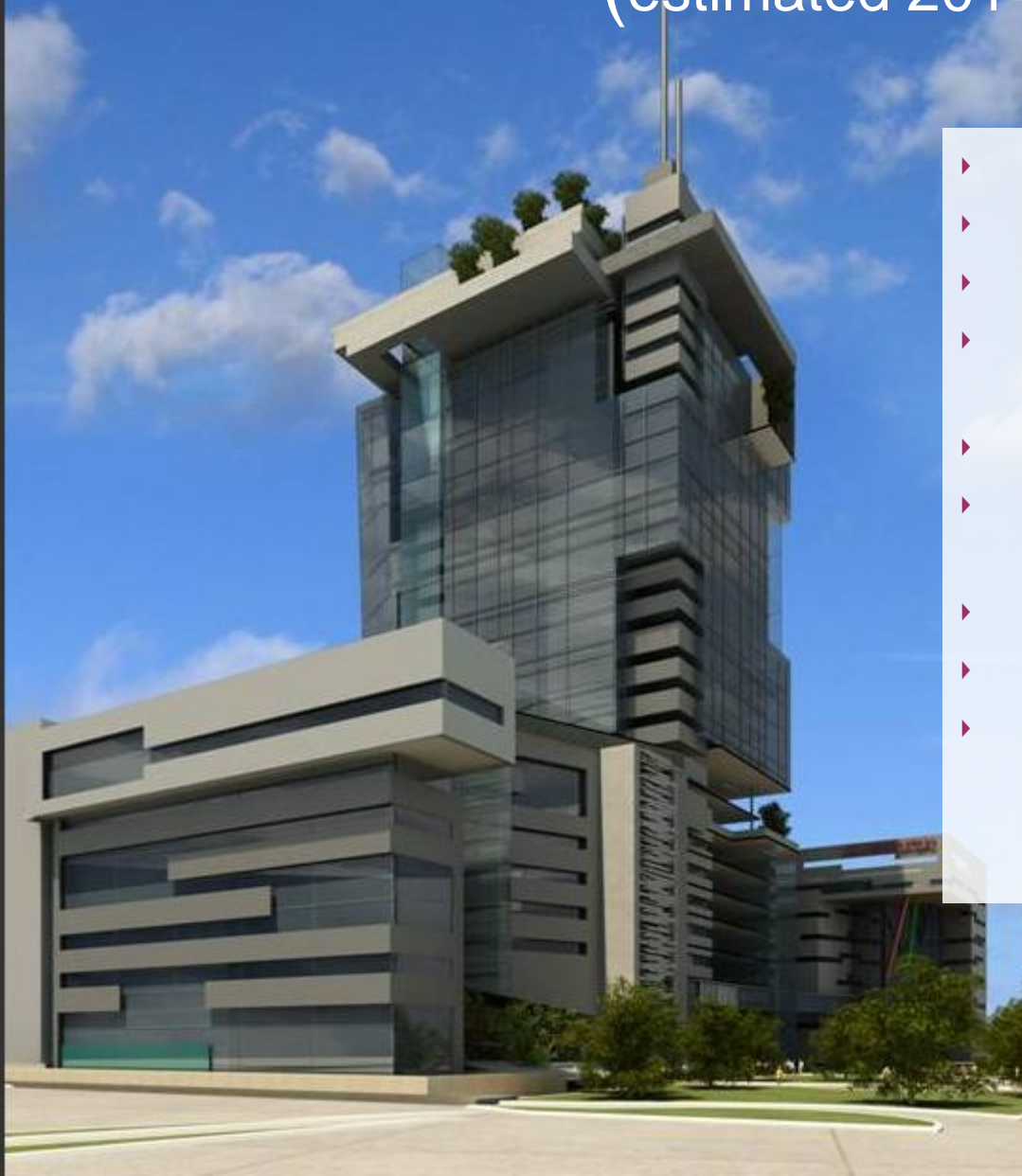
The Future – Oncology Center (estimated 2012)



- ▶ Inpatient Oncology Ward
- ▶ Day Clinic Department
- ▶ Accelerator and Radiotherapy Unit
- ▶ Chemotherapy Unit
- ▶ Brachytherapy Unit
- ▶ Adjunctive and Supportive Therapy Unit

The Future - Biomedical Discovery Tower

(estimated 2014)



- › Diabetes and Metabolic Disease
- › Emerging Infectious Disease
- › Translational Genetics
- › Medical Imaging and Device Technology
- › Cancer Therapeutics Discovery
- › Immunological and Inflammatory Disease
- › Trauma and Tissue Injury
- › Neurodegenerative Disease
- › Health Services Research: Preventive Medicine and Global Outreach

VIEW FROM MAIN ENTRANCE

